

---

LID

PID

80-85%



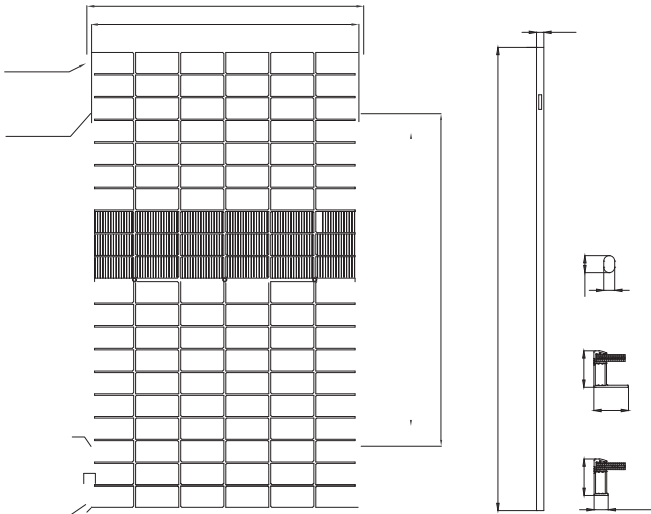
<b>STC :</b>	1000W/m <sup>2</sup>	25	=1.5		
(Pmpp/Wp)	495	500	505	510	515
(Vmpp/V)	36.37	36.55	36.73	36.91	37.08
(mpp/A)	13.61	13.68	13.75	13.82	13.89
(Voc/V)	43.52	43.72	43.92	44.12	44.32
(Isc/A)	14.35	14.42	14.49	14.56	14.63
	22.4%	22.6%	22.8%	23.0%	23.3%

<b>NMOT :</b>	800W/m <sup>2</sup>	20	=1.5		1m/s
(Pmpp/Wp)	371.7	375.2	378.8	382.4	386.3
(Vmpp/V)	34.13	34.30	34.47	34.64	34.80
(mpp/A)	10.89	10.94	10.99	11.04	11.10
(Voc/V)	41.01	41.20	41.39	41.58	41.77
(Isc/A)	11.51	11.57	11.63	11.69	11.75

	Pmpp/Wp	Vmpp/V	Impp/A	Voc/V	Isc/A
5%	525	36.55	14.36	43.72	15.14
15%	575	36.55	15.73	43.72	16.58
25%	625	36.55	17.10	43.72	18.03

(Pmpp)	-0.29%/
(Isc)	+0.043%/
(Voc)	-0.24%/
(NMOT)	42 2°C

(IEC)	1500Vdc
	3
	IP 68
	30 A
	-40~+85°C
	80±5%



( x x ) 1952 x 1134 x 30 mm

N

120 (6\*20)

2.0+2.0 mm ( / )  
: (+) 300 mm (-) 300 mm

(IEC) 4 mm<sup>2</sup> / 12 AWG

5400 Pa ( ) / 2400 Pa ( )

(IEC) PV-HYC11xyz( ) / MC4 EVO2( )

26.5 kg

36 /

1003 kg

(17.5m ) 1152 /

=1.5X

STC

3%